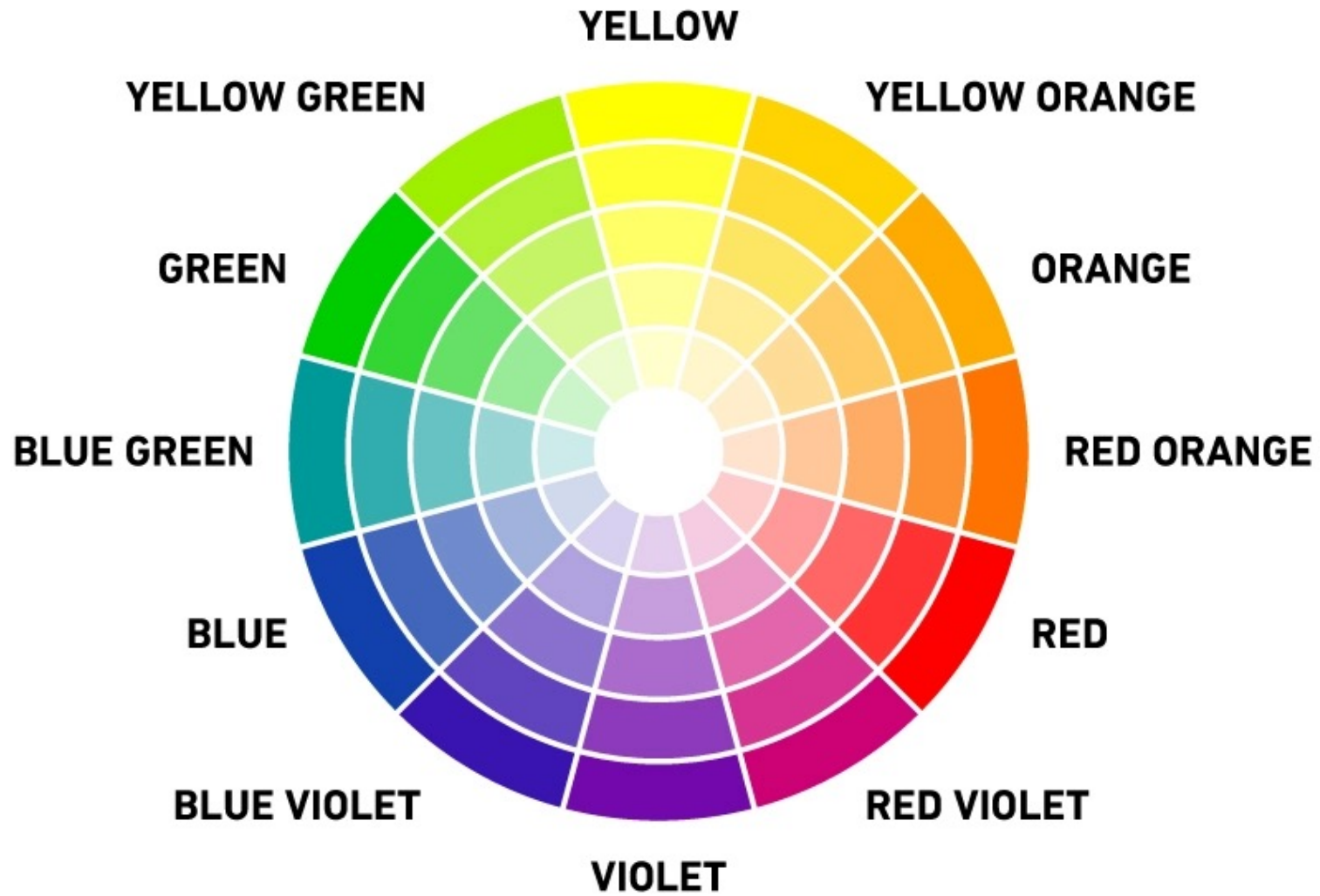




Composition: Colour

Photography 11 & 12



The Colour Wheel.

You may have seen this in Grade 2 or even in an Art class.

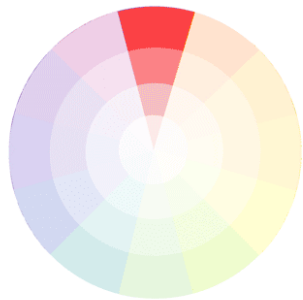
All colours have a connection and work wonderfully in visual mediums.

However, there are some simple guidelines to keep in mind to help plan out what colours can create interest together.

Let's take a look...

Basic Guidelines

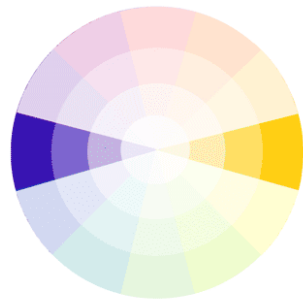
Color Schemes 101



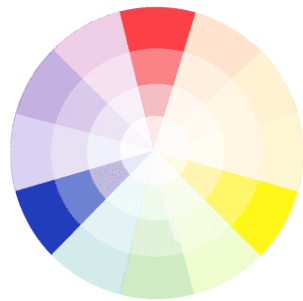
Monochromatic



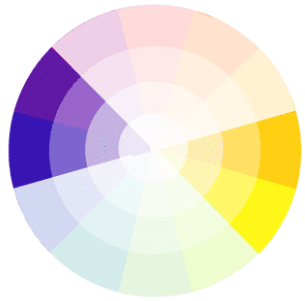
Analogous



Complementary



Triad



Split-Complementary



Tetradic

- All colours interact based on 'Scheme Ideas'.
- Essentially, these help artists understand which colours work well together and what great high interest points.
- As well, these ideas can be a great foundation to thinking about colour as a key element in photographs.
- Let's look at the 3 most common Schemes...

Colour Scheme Explanations



Complementary

The complementary color scheme consists of *two colors that are opposite* on the color wheel.



Monochromatic

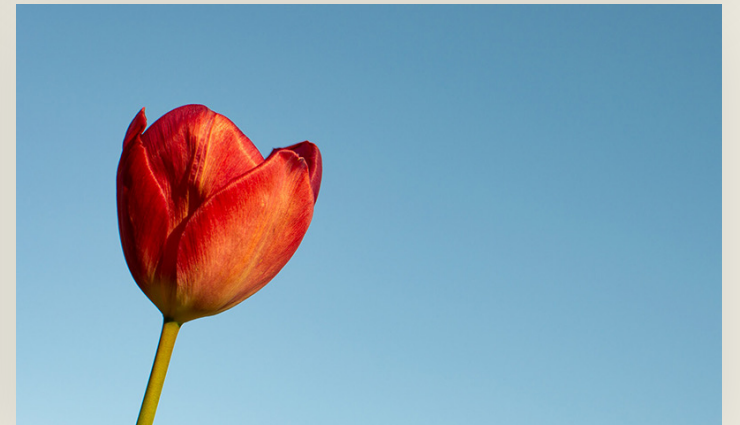
The monochromatic color scheme uses variations in lightness and saturation of a single color.



Analogous

The analogous colour scheme uses colors that are *adjacent to each other* on the color wheel.

Complementary





Analogous

Monochromatic

